



SV 2, 4, 8, 16 Series

Highly reliable and technologically advanced vertical multi-stage centrifugal pumps, capable of satisfying the needs of a wide variety of users. Many construction versions are available, with models featuring 2-4-8-16 m³/h nominal capacities.

Available versions:

- F:** AISI 304, in-line ports with round flanges.
- T:** AISI 304, in-line ports with oval flanges.
- R:** AISI 304, top and bottom ports with round flanges.
- N:** AISI 316, in-line ports with round flanges.
- V:** AISI 316, in-line ports with Victaulic connectors.
- C:** AISI 316, in-line ports with clamp connectors.

SPECIFICATIONS

- Delivery:** up to 24 m³/h
- Head:** up to 260 m
- Power supply:** three-phase and single-phase 50 and 60 Hz
- Power:** 0.25 kW to 15 kW
- Maximum operating pressure:** 16, 25 bar (depending on model and configuration).
- Temperature of pumped liquid:** -30°C to +120°C
- Insulation class:** F
- Protection:** IP55

MATERIALS

- Pump body:** Stainless steel
- Impeller, diffuser:** Stainless steel
- Seal holder:** Stainless steel
- Adapter:** Cast iron
- Mechanical seal:** Silicon-carbide/Carbon/EPDM
- Fill and drain plugs:** Stainless steel
- Elastomers:** EPDM



APPLICATIONS

- Water distribution, irrigation
- Heating, ventilation
- Pressure boosting, industrial washing equipment
- Cooling, chilling
- Water treatment, filtration systems
- Auxiliary equipment, fire-fighting equipment, general industry

Available on request:

- version with efficiency level 1 motor
- version with 4-pole motor
- version with ATEX motor, group 2, category 3

For versions with higher capacities, see page 134.

For a complete list of technical information, consult www.lowara.com

Engineered for life



General Catalogue

SV2-16 SERIES – HYDRAULIC PERFORMANCE TABLE AT 50 Hz, 2 POLES

PUMP TYPE	RATED POWER		Q = DELIVERY																		
	kW	HP	l/min	20	30	40	50	60	70	100	120	133	150	167	200	233	267	300	350	400	
			m ³ /h	0	1,2	1,8	2,4	3	3,6	4,2	6	7,2	8	9	10	12	14	16	18	21	24
H = TOTAL HEAD IN COLUMN OF WATER (METRES)																					
SV2 02	0,37	0,5	21,5	18,5	17	15	13	10,5	7,5												
SV2 03	0,37	0,5	32	28	25,2	23	19,5	15,5	11												
SV2 04	0,55	0,75	42,5	37,5	34	30,5	26	20,5	15												
SV2 05	0,75	1	53,5	47	42,5	38	32	26	18												
SV2 06	0,75	1	64	56	51	45,5	38,5	31	22												
SV2 07	1,1	1,5	75	65,5	60	53	45	36,5	26												
SV2 08	1,1	1,5	85,5	75	68	61	51,5	41,5	30												
SV2 09	1,1	1,5	96	84	76,5	68,5	58	46,5	32,5												
SV2 11	1,5	2	117	103	94	84	71	57	41												
SV2 12	1,5	2	128	112	102	91	77	62	44												
SV2 14	2,2	3	150	131	119	106	90	73	52												
SV2 16	2,2	3	171	150	136	122	103	83	59												
SV2 18	2,2	3	192	168	153	137	116	93	66												
SV2 20	3	4	214	187	170	152	129	104	74												
SV2 22	3	4	235	206	187	167	142	114	81												
SV2 24	3	4	256	224	205	182	155	125	89												
SV4 02	0,37	0,5	20			17	16	15	14,5	10,5	7,5	5									
SV4 03	0,55	0,75	30			25,5	24	23	22	16	11	7,5									
SV4 04	0,75	1	40			34	32	30,5	29	21	15	10									
SV4 05	1,1	1,5	50			42,5	40	38	36,5	26	18,5	12,5									
SV4 06	1,1	1,5	60			51	48	45,5	44	31,5	22	16									
SV4 07	1,1	1,5	70			59,5	56	53	51	37	26	18									
SV4 08	1,5	2	80			68	65	61	58,5	42	29,5	21									
SV4 09	1,5	2	90			76,5	73	68,5	65,5	47	33,5	23									
SV4 11	2,2	3	111			93,5	89	83,5	80,5	58	41	29									
SV4 13	2,2	3	131			111	105	99	95	68	48	34									
SV4 14	3	4	141			119	113	106	102	73,5	52	36									
SV4 16	3	4	161			136	129	122	117	84	59,5	41									
SV4 18	3	4	181			153	145	137	131	94,5	67	46									
SV4 20	4	5,5	201			170	161	152	146	105	74	53									
SV4 22	4	5,5	221			187	178	167	161	116	81,5	58									
SV4 24	4	5,5	241			204	194	182	175	126	89	63									
SV8 02	1,1	1,5	27							24,8	24	23	22	20,5	17,2	13,2					
SV8 03	1,5	2	41							37	36	34,5	33	30,5	25,8	20					
SV8 04	2,2	3	55							50	47,5	46	44	41	34,5	26,5					
SV8 05	2,2	3	68							62	60	57,5	55	51	43	33					
SV8 06	3	4	82							74,5	71	69	66	61,5	52	40					
SV8 08	4	5,5	110							99	95	92	87,5	81,5	69	53					
SV8 09	4	5,5	123							112	107	104	97,5	92	78	60					
SV8 11	5,5	7,5	150							137	130	127	119	112	95	73					
SV8 12	5,5	7,5	164							149	142	138	130	123	103	80					
SV8 14	7,5	10	192							174	166	161	152	143	120	93					
SV8 16	7,5	10	220							199	190	184	174	163	138	106					
SV16 02	2,2	3	35										32,5	32	31	29,5	27,5	25	20	14,3	
SV16 03	3	4	52										49	48	46	44	41	37,5	30,2	21,5	
SV16 04	4	5,5	69										65	64	62	59	54,5	50	40,3	28,6	
SV16 05	5,5	7,5	86										81	80	77	73	68,5	62	50	35,8	
SV16 06	5,5	7,5	104										98	96	92	88	82	75	60,5	43	
SV16 07	7,5	10	121										114	112	108	103	96	87	70,5	50	
SV16 08	7,5	10	138										130	128	123	117	109	100	81	57	
SV16 10	11	15	173										163	160	154	147	137	125	101	72	
SV16 12	11	15	207										195	192	185	176	164	150	121	86	
SV16 14	15	20	242										228	224	215	205	192	175	141	100	
SV16 15	15	20	260										244	240	231	220	205	187	151	108	

Performance according to ISO standards 9906 - Annex A.

sv2-16-2p50_b_th



General Catalogue

SV2-16 SERIES – HYDRAULIC PERFORMANCE TABLE AT 50 Hz, 4 POLES



PUMP TYPE	RATED POWER		Q = DELIVERY																	
			l/min	10	15	20	25	30	35	50	60	67	75	90	100	120	130	150	170	200
			m ³ /h	0,6	0,9	1,2	1,5	1,8	2,1	3	3,6	4	4,5	5,4	6	7,2	7,8	9	10,2	12
		H = TOTAL HEAD METRES COLUMN OF WATER																		
kW	HP																			
SV2 03..4	0,25	0,34	7,9	7,2	6,5	5,8	4,8	3,8	2,8											
SV2 06..4	0,25	0,34	16	14,4	13	11,6	9,7	7,7	5,6											
SV2 09..4	0,25	0,34	22,4	21,5	19,5	17,5	14,5	11,5	8,5											
SV2 12..4	0,25	0,34	31,5	29	26,5	23	19,5	15,5	11											
SV2 14..4	0,25	0,34	37	33,5	30,5	27	22,5	18	13											
SV2 16..4	0,25	0,34	42	38,5	35	31	26	20,5	15											
SV2 18..4	0,37	0,5	47,5	43	39,5	34,5	29	23	16,5											
SV2 20..4	0,37	0,5	53	48	44	38,5	32,5	25,5	18,5											
SV2 22..4	0,37	0,5	58	53	48	42,5	35,5	28	20,5											
SV2 24..4	0,37	0,5	63,5	57,5	52,5	46,5	39	30,5	22											
SV4 03..4	0,25	0,34	7			6,3	6	5,8	5,5	4,3	3	2								
SV4 06..4	0,25	0,34	14			12,5	12	11,5	11	8,5	6	4,3								
SV4 09..4	0,25	0,34	21			19	18,5	17,5	16,5	12,5	9	6,4								
SV4 12..4	0,25	0,34	28,5			25,5	24,5	23	22	17	12	8,5								
SV4 14..4	0,37	0,5	33			29,5	28,5	27	26	19,5	14	10								
SV4 16..4	0,37	0,5	37,5			34	32,5	31	29,5	22,5	16	11,5								
SV4 18..4	0,37	0,5	42,5			38	36,5	35	33	25	18	13								
SV4 20..4	0,55	0,75	47			42,5	41	39	37	28	20	14								
SV4 22..4	0,55	0,75	52			46,5	45	42,5	40,5	31	22	15,5								
SV4 24..4	0,55	0,75	56,5			51	49	46,5	44	34	24	17								
SV8 04..4	0,55	0,75	13,5							12,5	12	11,5	11	9,5	8,5	6				
SV8 06..4	0,55	0,75	20							18,5	18	17	16,5	14,5	12,8	9				
SV8 08..4	0,55	0,75	27							25	24	23	22	19	17	12				
SV8 10..4	0,55	0,75	34							31	30	29	27	24	21,5	15				
SV8 12..4	0,75	1	40,5							37,5	36	34,5	32,5	28,5	25,5	18				
SV8 14..4	0,75	1	47							43,5	41,5	40	38	33,5	29,5	21				
SV8 15..4	1,1	1,5	50,5							46,5	44,5	43	41	36	32	22,5				
SV8 16..4	1,1	1,5	54							49,5	47,5	46	43,5	38	34	24				
SV16 04..4	0,55	0,75	17										16	15,8	15,5	14,5	14	12,5	11	7,5
SV16 06..4	0,75	1	25										24,5	23,5	23	22	21	19	16,5	11
SV16 08..4	1,1	1,5	33,5										32,5	31,5	31	29	28	25,5	21,5	14,5
SV16 09..4	1,1	1,5	38										36,5	35,5	35	33	31,5	28,5	24,5	16,5
SV16 11..4	1,5	2	46										44,5	43,5	42,5	40	38,5	34,5	30	20
SV16 13..4	1,5	2	54,5										52,5	51,4	50	47,5	45,5	41	35,5	24
SV16 15..4	2,2	3	63										61	59,5	58	54,5	52,5	47,5	41	28
SV16 16..4	2,2	3	67										65	63,5	62	58,5	56	50,5	43,5	30

Performances in compliance with ISO 9906 - Annex A.

sv2-16-4p50-en_b_th



ITT

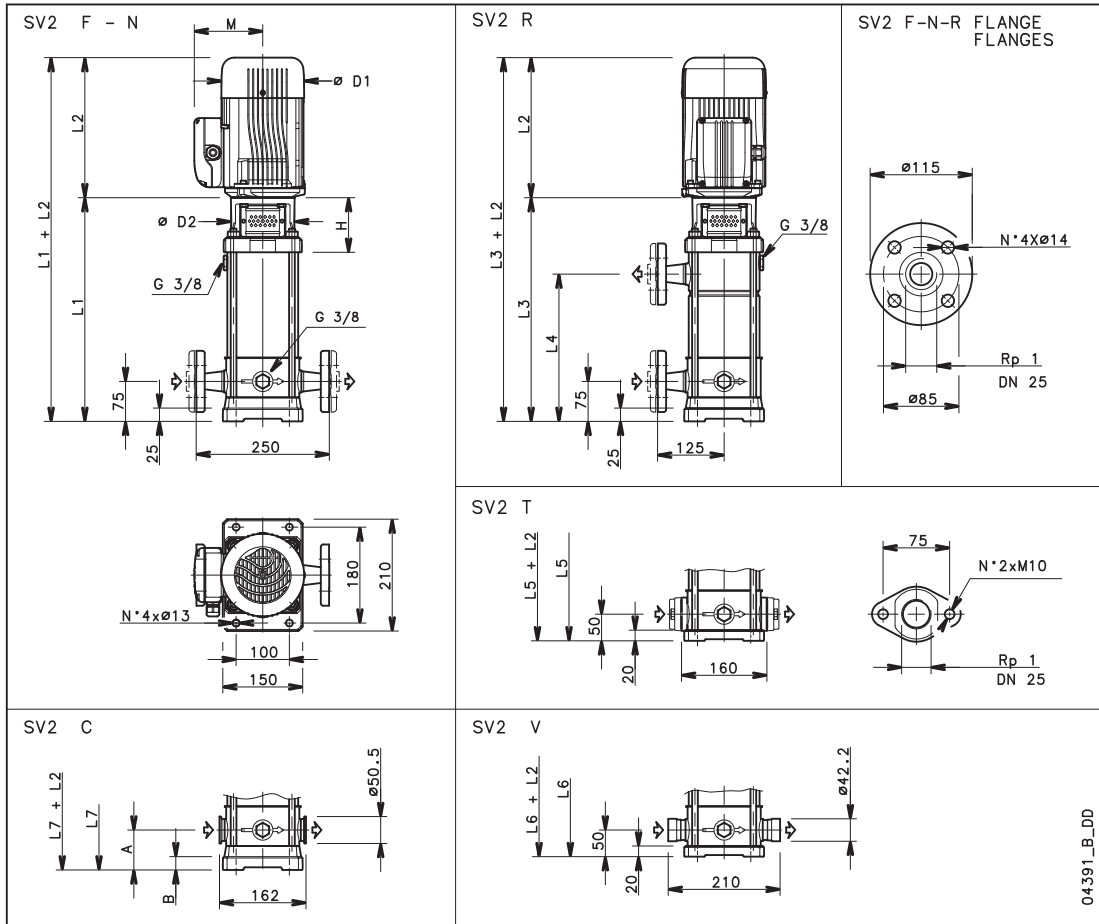
Lowara

General Catalogue

SV2 SERIES - DIMENSIONS AND WEIGHTS, 2 POLES

Version **F**: AISI 304, in-line ports, round flanges from SV202 to SV224, PN25.
 Version **T**: AISI 304, in-line ports, oval flanges from SV202 to SV214, PN16.
 Version **R**: AISI 304, overlying ports, roundflanges from SV204 to SV224, PN25.

Version **N**: AISI 316, in-line ports, round flanges from SV202 to SV224, PN25.
 Version **V**: AISI 316, in-line ports, Victaulic® connectors from SV202 to SV224, PN25.
 Version **C**: AISI 316, in-line ports, Clamp connectors from SV202 to SV214, PN16. from SV216 to SV224, PN25.



PUMP TYPE	MOTOR		DIMENSIONS (mm)																WEIGHT kg	
	kW	SIZE	L1	L2			L3	L4	L5	L6	L7	H	M		D1		D2	A	B	PUMP
SV202	0,37	71	285	209	209	-	-	260	260	260	93	111	111	120	120	105	50	20	9,5	17,5
SV203	0,37	71	310	209	209	-	-	285	285	285	93	111	111	120	120	105	50	20	10	18
SV204	0,55	71	335	231	231	335	200	310	310	310	93	121	121	140	140	105	50	20	10,5	19
SV205	0,75	80	370	226	226	370	225	345	345	345	103	121	121	140	140	120	50	20	11,5	21,5
SV206	0,75	80	395	226	226	395	250	370	370	370	103	121	121	140	140	120	50	20	12	22
SV207	1,1	80	420	263	263	420	275	395	395	395	103	137	129	155	155	120	50	20	12,5	23
SV208	1,1	80	445	263	263	445	300	420	420	420	103	137	129	155	155	120	50	20	13	23,5
SV209	1,1	80	470	263	263	470	325	445	445	445	103	137	129	155	155	120	50	20	13,5	24
SV211	1,5	90	530	263	263	530	375	505	505	505	113	137	129	155	155	140	50	20	15	31
SV212	1,5	90	555	263	263	555	400	530	530	530	113	137	129	155	155	140	50	20	15,5	31,5
SV214	2,2	90	605	298	263	605	450	580	580	580	113	165	129	174	155	140	50	20	16,5	33,5
SV216	2,2	90	655	298	263	655	500	-	630	655	113	165	129	174	155	140	75	25	17,5	34,5
SV218	2,2	90	705	298	263	705	550	-	680	705	113	165	129	174	155	140	75	25	18,5	35,5
SV220	3	100	765	-	298	765	600	-	740	765	123	-	134	-	174	160	75	25	20	41
SV222	3	100	815	-	298	815	650	-	790	815	123	-	134	-	174	160	75	25	21	42
SV224	3	100	865	-	298	865	700	-	840	865	123	-	134	-	174	160	75	25	22	43

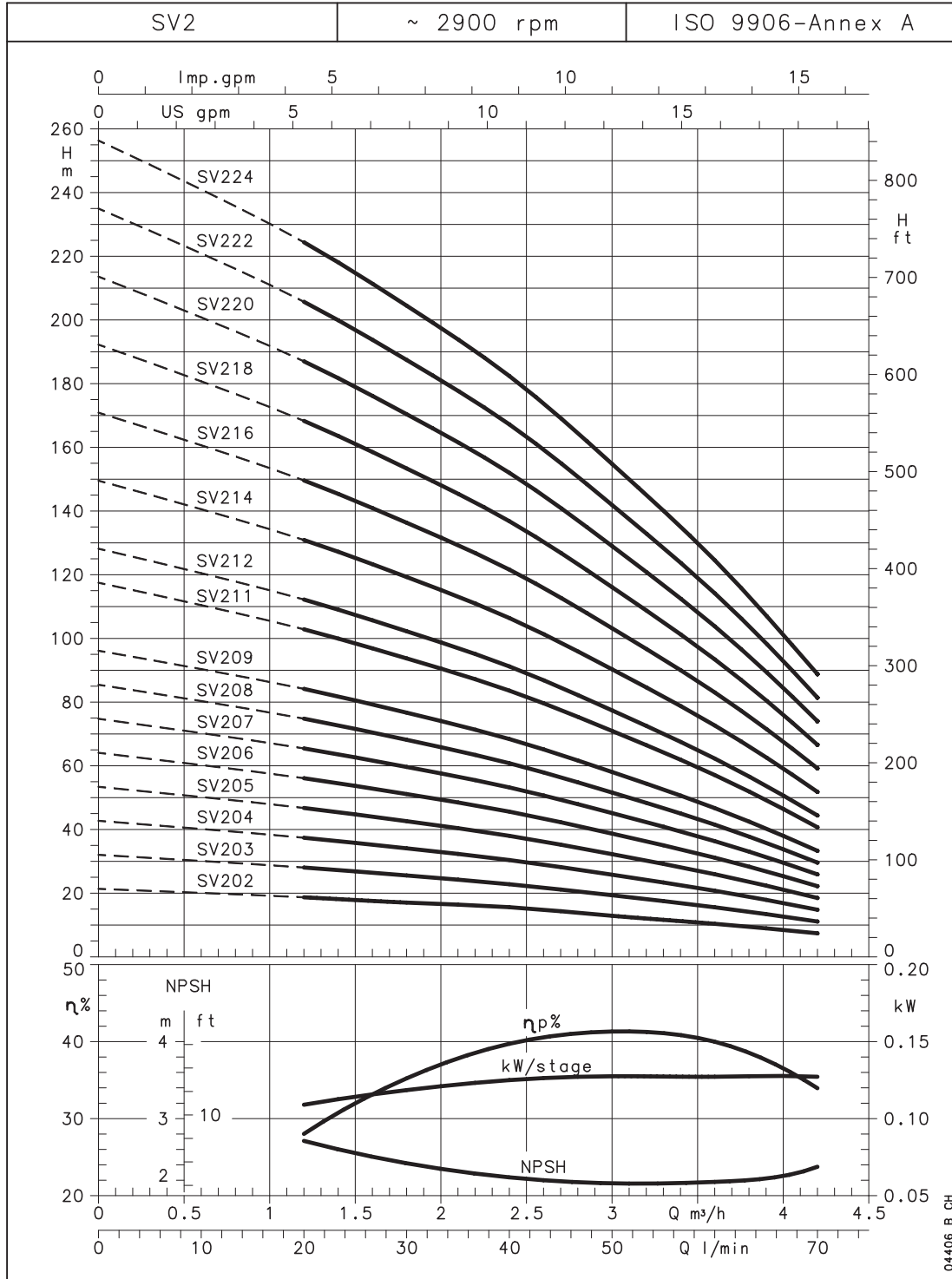
sv2-2p50-en_b_td

Engineered for life



General Catalogue

SV2 SERIES – OPERATING CHARACTERISTICS AT 50 Hz, 2 POLES



These performances are valid for liquids with density $\rho = 1.0 \text{ kg/dm}^3$ and kinematic viscosity $\nu = 1 \text{ mm}^2/\text{s}$.

Engineered for life



ITT

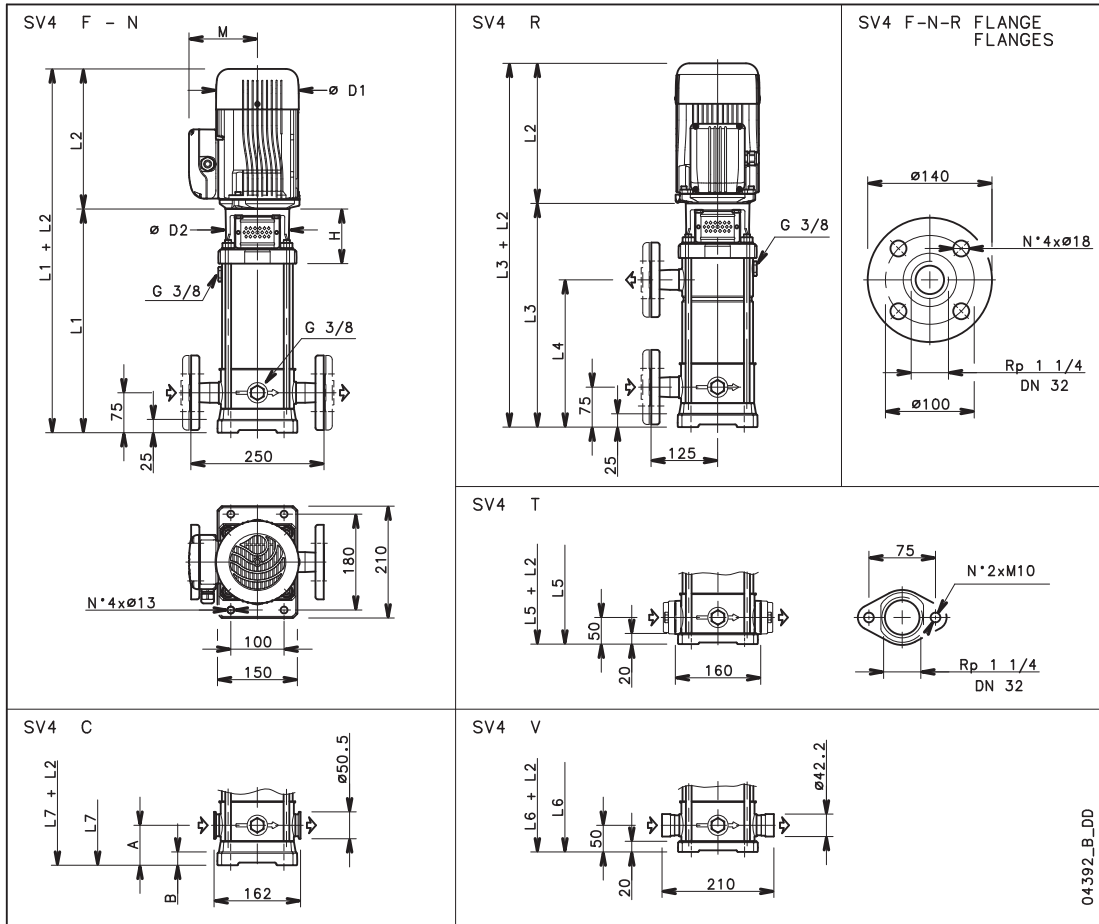
Lowara

General Catalogue

SV4 SERIES - DIMENSIONS AND WEIGHTS, 2 POLES

Version **F**: AISI 304, in-line ports, round flanges from SV402 to SV424, PN25.
 Version **T**: AISI 304, in-line ports, oval flanges from SV402 to SV414, PN16.
 Version **R**: AISI 304, overlaying ports, round flanges from SV405 to SV424, PN25.

Version **N**: AISI 316, in-line ports, round flanges from SV402 to SV424, PN25.
 Version **V**: AISI 316, in-line ports, Victaulic® connectors from SV402 to SV424, PN25.
 Version **C**: AISI 316, in-line ports, clamp connectors from SV405 to SV414, PN16, from SV416 to SV424, PN25.



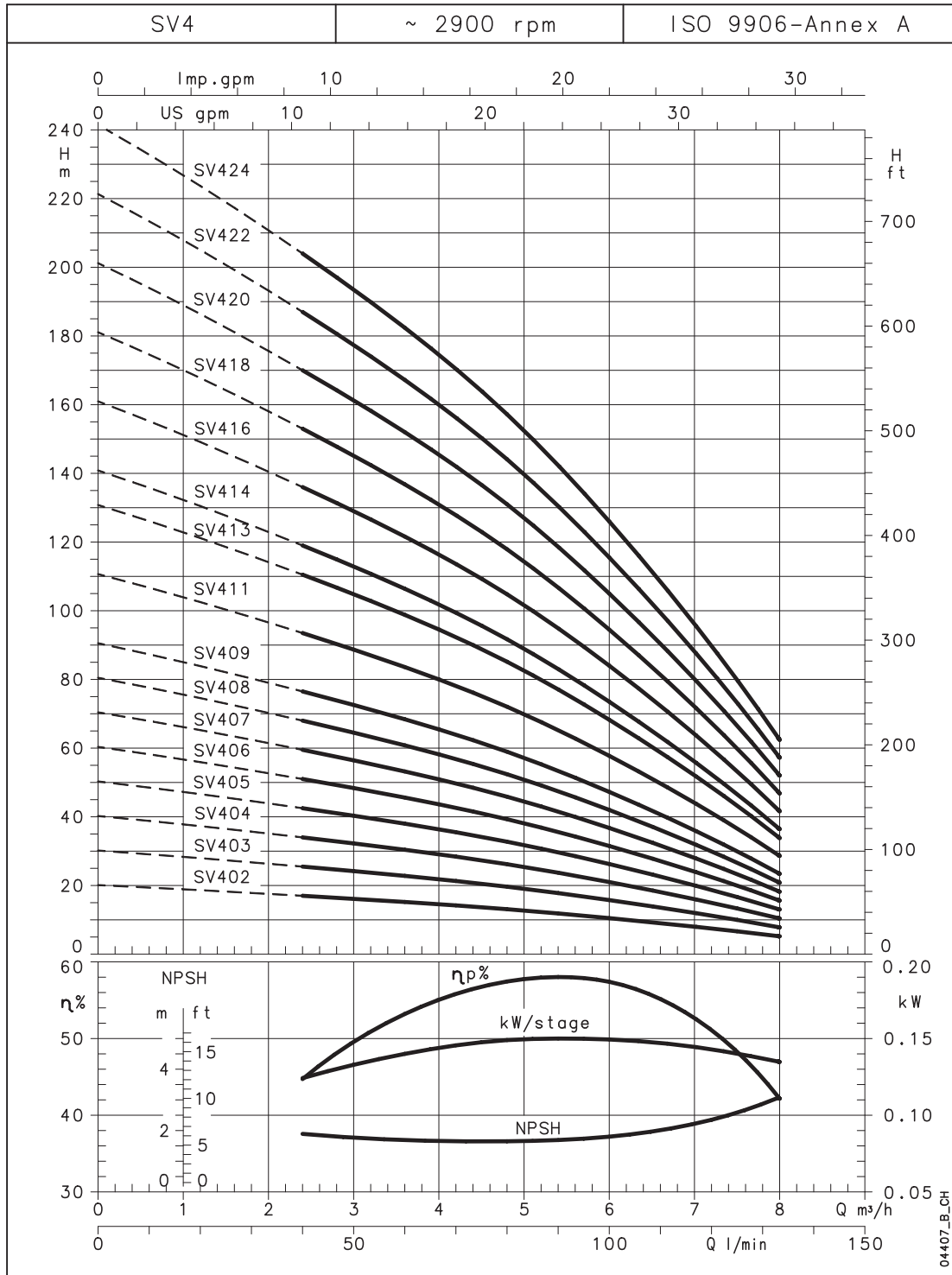
PUMP TYPE	MOTOR		DIMENSIONS (mm)															WEIGHT kg		
	kW	SIZE	L1	L2			L3	L4	L5	L6	L7	H	M		D1		D2	A	B	PUMP
SV402	0,37	71	285	209	209	-	-	260	260	260	93	111	111	120	120	105	50	20	9,5	17,5
SV403	0,55	71	310	231	231	-	-	285	285	285	93	121	121	140	140	105	50	20	10	18,5
SV404	0,75	80	345	226	226	-	-	320	320	320	103	121	121	140	140	120	50	20	11	21
SV405	1,1	80	370	263	263	370	225	345	345	345	103	137	129	155	155	120	50	20	11,5	22
SV406	1,1	80	395	263	263	395	250	370	370	370	103	137	129	155	155	120	50	20	12	22,5
SV407	1,1	80	420	263	263	420	275	395	395	395	103	137	129	155	155	120	50	20	12,5	23
SV408	1,5	90	455	263	263	455	300	430	430	430	113	137	129	155	155	140	50	20	13,5	29,5
SV409	1,5	90	480	263	263	480	325	455	455	455	113	137	129	155	155	140	50	20	14	30
SV411	2,2	90	530	298	263	530	375	505	505	505	113	165	129	174	155	140	50	20	15	32
SV413	2,2	90	580	298	263	580	425	555	555	555	113	165	129	174	155	140	50	20	16	33
SV414	3	100	615	-	298	615	450	590	590	590	123	-	134	-	174	160	50	20	17	38
SV416	3	100	665	-	298	665	500	-	640	665	123	-	134	-	174	160	75	25	18	39
SV418	3	100	715	-	298	715	550	-	690	715	123	-	134	-	174	160	75	25	19	40
SV420	4	112	765	-	319	765	600	-	740	765	123	-	154	-	197	160	75	25	20	46,5
SV422	4	112	815	-	319	815	650	-	790	815	123	-	154	-	197	160	75	25	21	47,5
SV424	4	112	865	-	319	865	700	-	840	865	123	-	154	-	197	160	75	25	22,5	49

Engineered for life

sv4-2p50-en_b_td



SV4 SERIES – OPERATING CHARACTERISTICS AT 50 Hz, 2 POLES



These performances are valid for liquids with density $\rho = 1.0 \text{ kg/dm}^3$ and kinematic viscosity $\nu = 1 \text{ mm}^2/\text{s}$.

Engineered for life



ITT

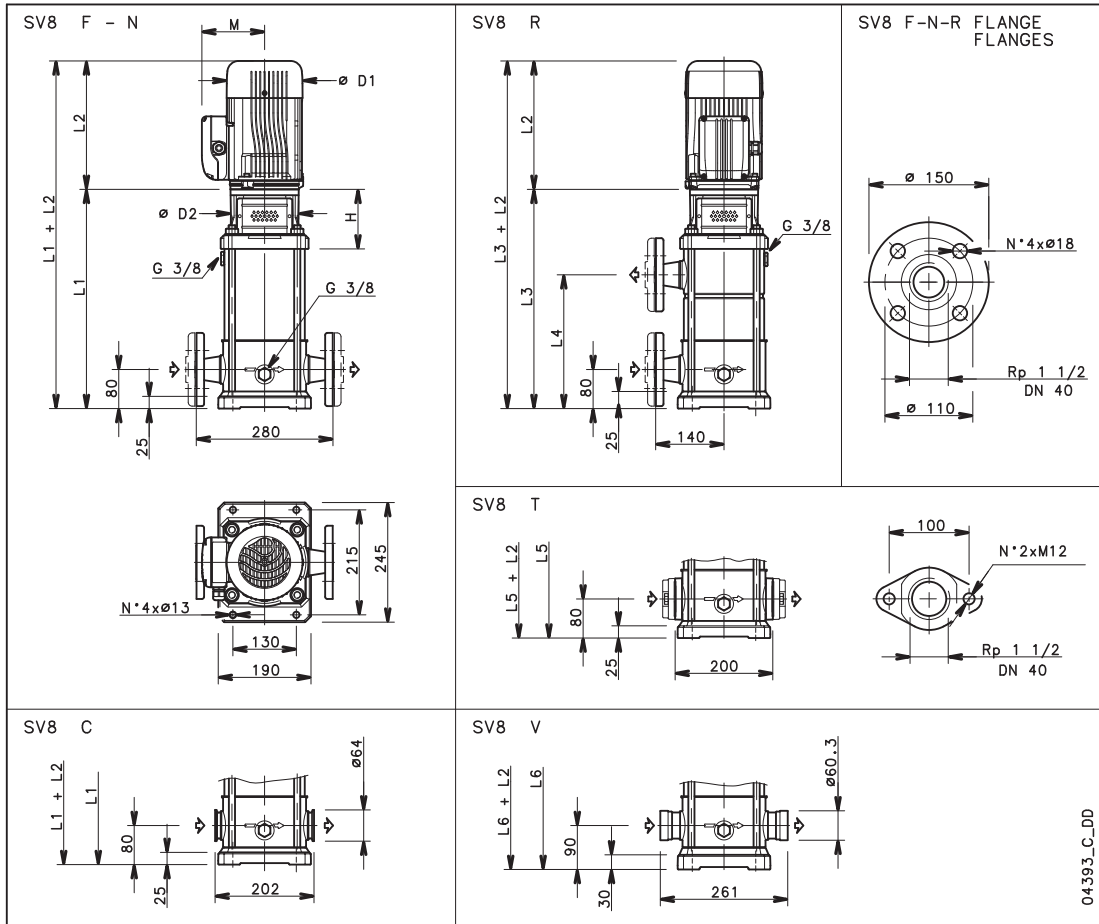
Lowara

General Catalogue

SV8 SERIES - DIMENSIONS AND WEIGHTS, 2 POLES

Version **F**: AISI 304, in-line ports, round flanges from SV802 to SV816, PN25.
 Version **T**: AISI 304, in-line ports, oval flanges from SV802 to SV814, PN16.
 Version **R**: AISI 304, overlaying ports, round flanges from SV803 to SV816, PN25.

Version **N**: AISI 316, in-line ports, round flanges from SV802 to SV816, PN25.
 Version **V**: AISI 316, in-line ports, Victaulic® connectors from SV802 to SV816, PN25.
 Version **C**: AISI 316, in-line ports, Clamp connectors from SV802 to SV816, PN25.



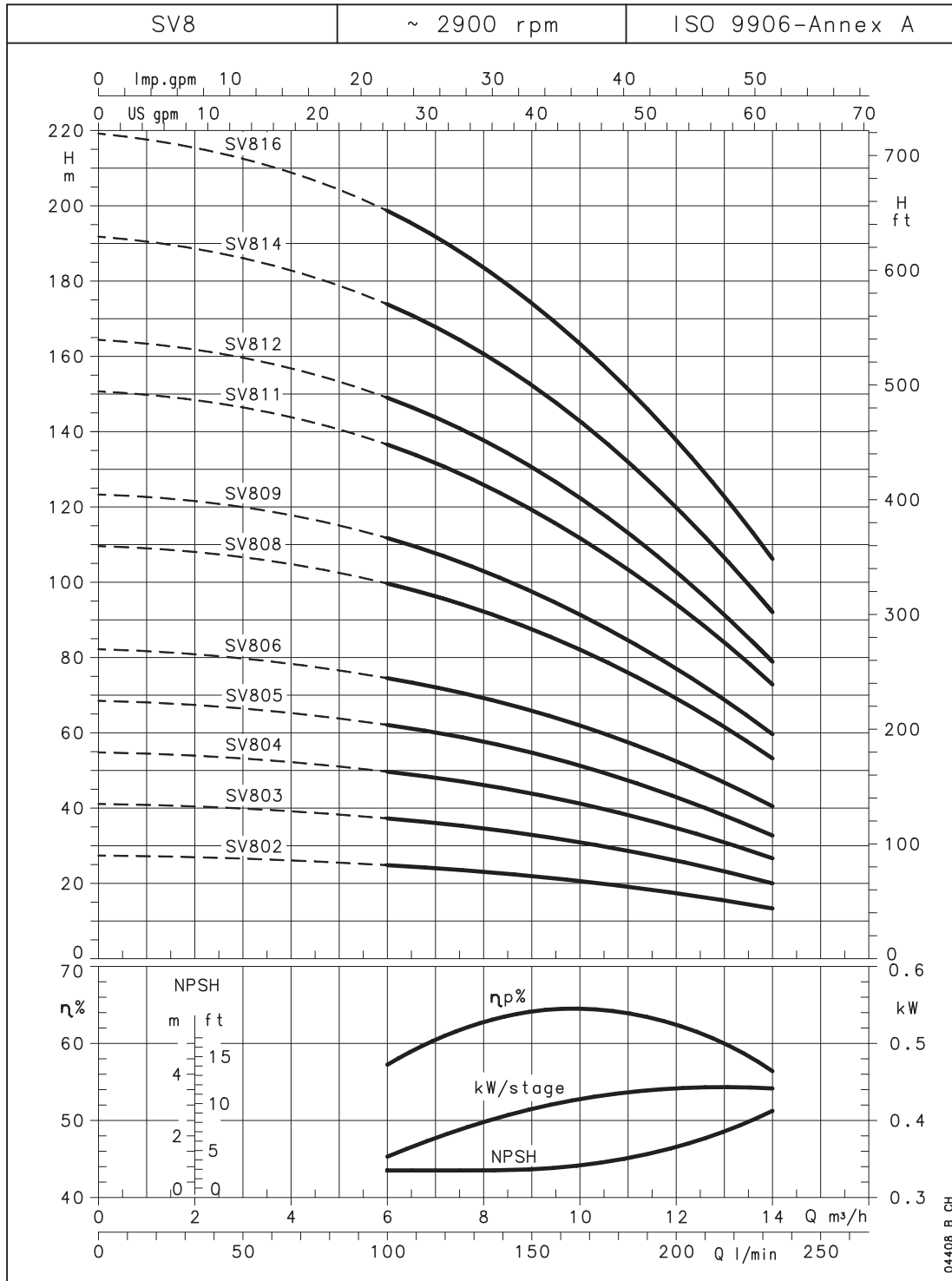
PUMP TYPE	MOTOR		DIMENSIONS (mm)												WEIGHT kg		
	kw	SIZE	L1	L2		L3	L4	L5	L6	H	M		D1		D2	PUMP	ELECTRIC PUMP
SV802	1,1	80	363	263	263	-	-	363	373	112	137	129	155	155	120	15	25,5
SV803	1,5	90	411	263	263	411	236	411	421	122	137	129	155	155	140	16	32
SV804	2,2	90	449	298	263	449	274	449	459	122	165	129	174	155	140	17	34
SV805	2,2	90	487	298	263	487	312	487	497	122	165	129	174	155	140	18	35
SV806	3	100	535	-	298	535	350	535	545	132	-	134	-	174	160	20	41
SV808	4	112	611	-	319	611	426	611	621	132	-	154	-	197	160	20,5	47
SV809	4	112	649	-	319	649	464	649	659	132	-	154	-	197	160	21,5	48
SV811	5,5	132	745	-	375	745	540	745	755	152	-	168	-	214	300	28	65,5
SV812	5,5	132	783	-	375	783	578	-	793	152	-	168	-	214	300	29	66,5
SV814	7,5	132	859	-	367	859	654	-	869	152	-	191	-	256	300	31	87
SV816	7,5	132	935	-	367	935	730	-	945	152	-	191	-	256	300	32,5	88,5

Engineered for life

sv8-2p50-en_b_td



SV8 SERIES – OPERATING CHARACTERISTICS AT 50 Hz, 2 POLES



These performances are valid for liquids with density $\rho = 1.0 \text{ kg/dm}^3$ and kinematic viscosity $\nu = 1 \text{ mm}^2/\text{s}$.

Engineered for life

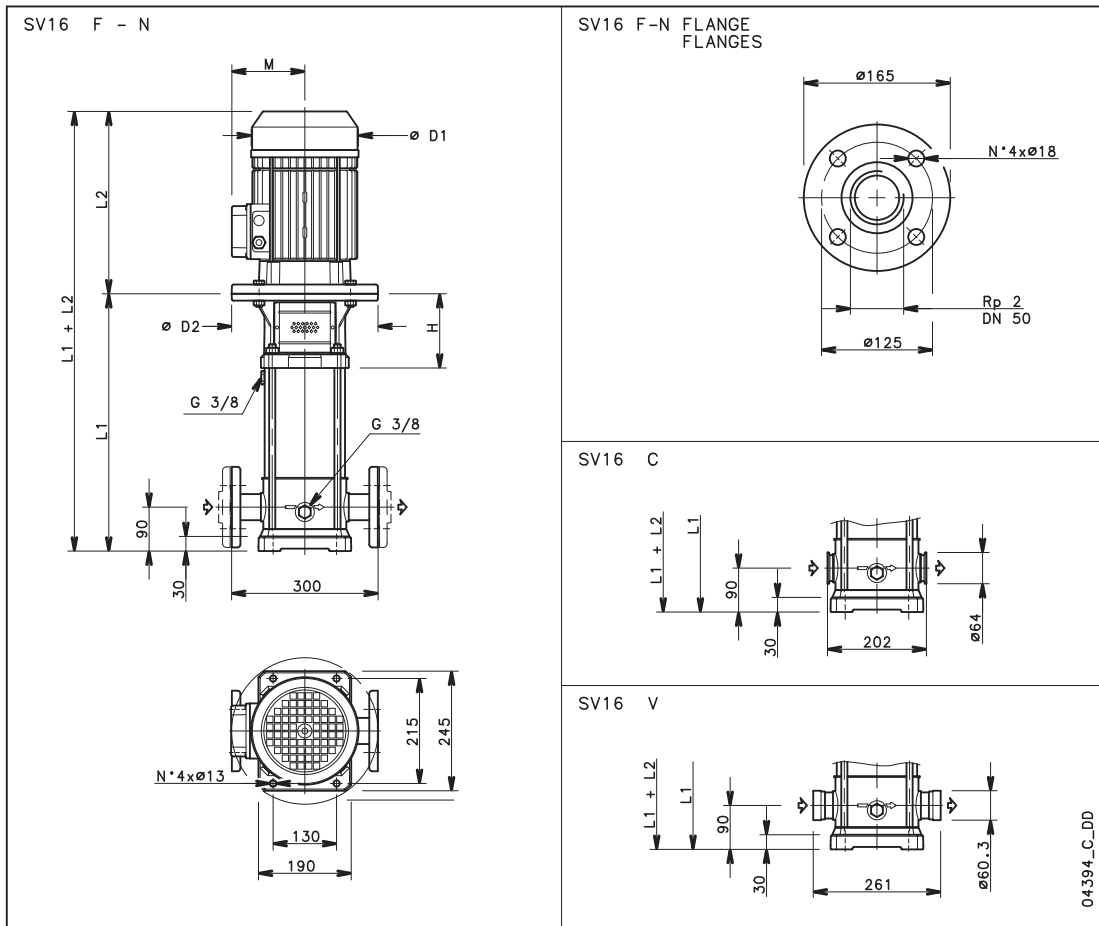


General Catalogue

SV16 SERIES - DIMENSIONS AND WEIGHTS, 2 POLES

Version **F**: AISI 304, in-line ports, round flanges from SV1602 to SV1615, PN25.
Version **N**: AISI 316, in-line ports, round flanges from SV1602 to SV1615, PN25.

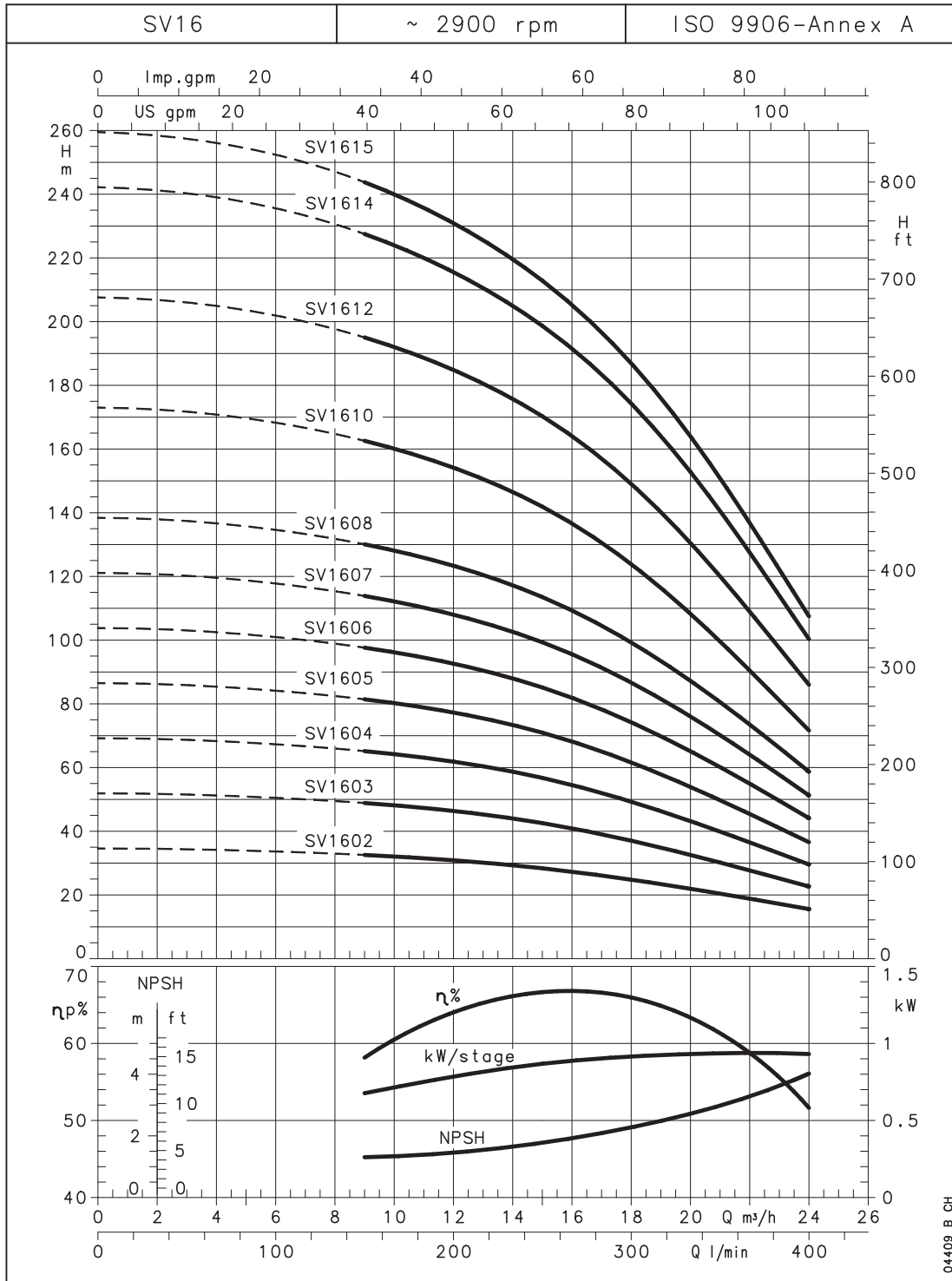
Version **V**: AISI 316, in-line ports, Victaulic® connectors from SV1602 to SV1615, PN25.
Version **C**: AISI 316, in-line ports, Clamp connectors from SV1602 to SV1615 PN25.



PUMP TYPE	MOTOR		DIMENSIONS (mm)									WEIGHT kg	
	kW	SIZE	L1	1-PHASE	3-PHASE	H	1-PHASE	3-PHASE	1-PHASE	3-PHASE	D2	PUMP	ELECTRIC
SV1602	2,2	90	383	298	263	122	165	129	174	155	140	15	32
SV1603	3	100	431	-	298	132	-	134	-	174	160	16	37
SV1604	4	112	469	-	319	132	-	154	-	197	160	17,5	44
SV1605	5,5	132	527	-	375	152	-	168	-	214	300	22	59,5
SV1606	5,5	132	565	-	375	152	-	168	-	214	300	23	60,5
SV1607	7,5	132	603	-	367	152	-	191	-	256	300	24	80
SV1608	7,5	132	641	-	367	152	-	191	-	256	300	25	81
SV1610	11	160	749	-	428	184	-	191	-	256	350	34	104
SV1612	11	160	825	-	428	184	-	191	-	256	350	36	106
SV1614	15	160	901	-	494	184	-	240	-	313	350	38	140
SV1615	15	160	939	-	494	184	-	240	-	313	350	39	141



SV16 SERIES – OPERATING CHARACTERISTICS AT 50 Hz, 2 POLES



These performances are valid for liquids with density $\rho = 1.0 \text{ kg/dm}^3$ and kinematic viscosity $\nu = 1 \text{ mm}^2/\text{s}$.

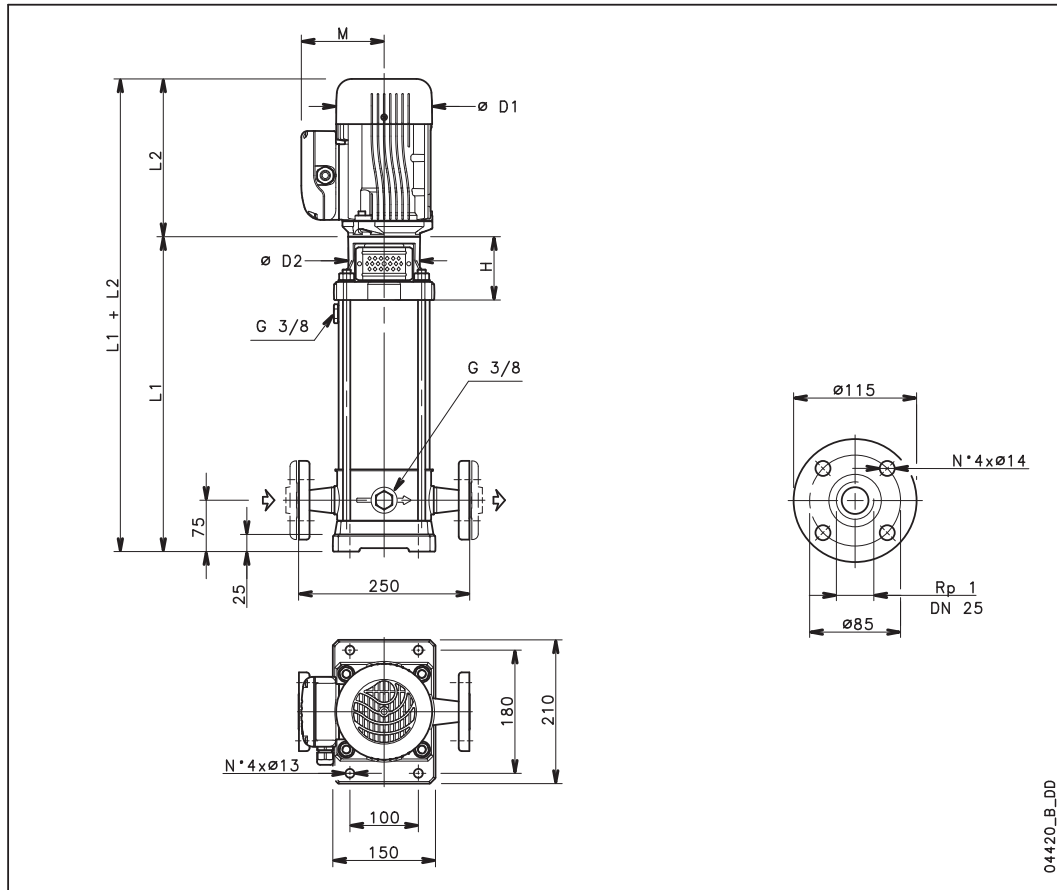
Engineered for life



General Catalogue

SV2 SERIES - DIMENSIONS AND WEIGHTS, 4 POLES

Version **F**: AISI 304, in-line ports, round flanges, PN25.
Version **M**: AISI 304, in-line ports, round flanges, PN25.



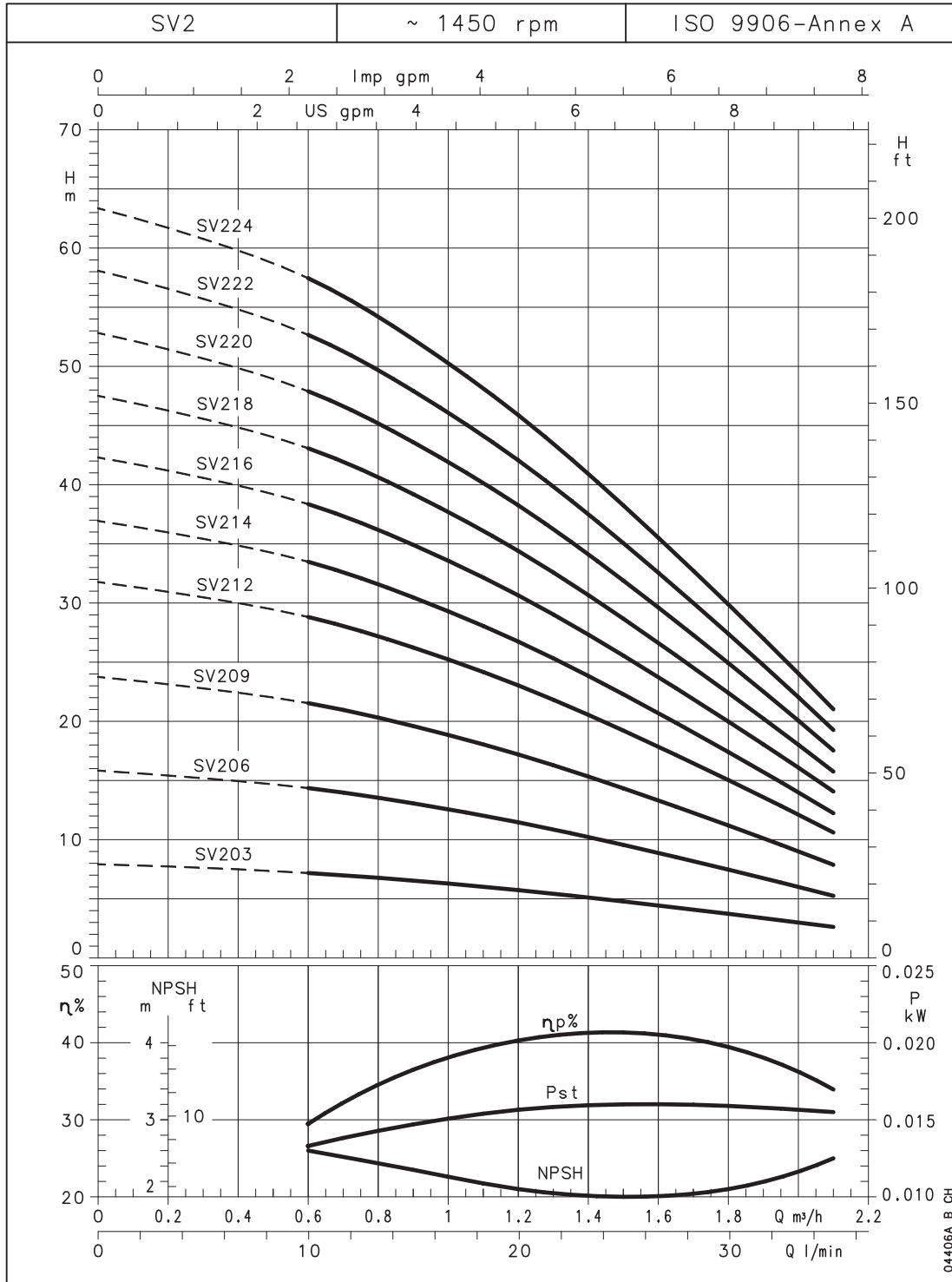
PUMP TYPE	MOTOR		DIMENSIONS (mm)						WEIGHT kg	
	kW	SIZE	L1	L2	H	M	D1	D2	PUMP	ELECTRIC PUMP
SV203..4	0,25	71	310	231	93	121	140	105	10	16,5
SV206..4	0,25	71	385	231	93	121	140	105	11,5	18
SV209..4	0,25	71	460	231	93	121	140	105	13	19,5
SV212..4	0,25	71	535	231	93	121	140	105	14,5	21
SV214..4	0,25	71	585	231	93	121	140	105	15,5	22
SV216..4	0,25	71	635	231	93	121	140	105	16,5	23
SV218..4	0,37	71	685	231	93	121	140	105	17,5	25
SV220..4	0,37	71	735	231	93	121	140	105	18,5	26
SV222..4	0,37	71	785	231	93	121	140	105	19,5	27
SV224..4	0,37	71	835	231	93	121	140	105	20,5	28

sv2-4p50-en_c_td

Engineered for life



SV2 SERIES - OPERATING CHARACTERISTICS AT 50 Hz, 4 POLES



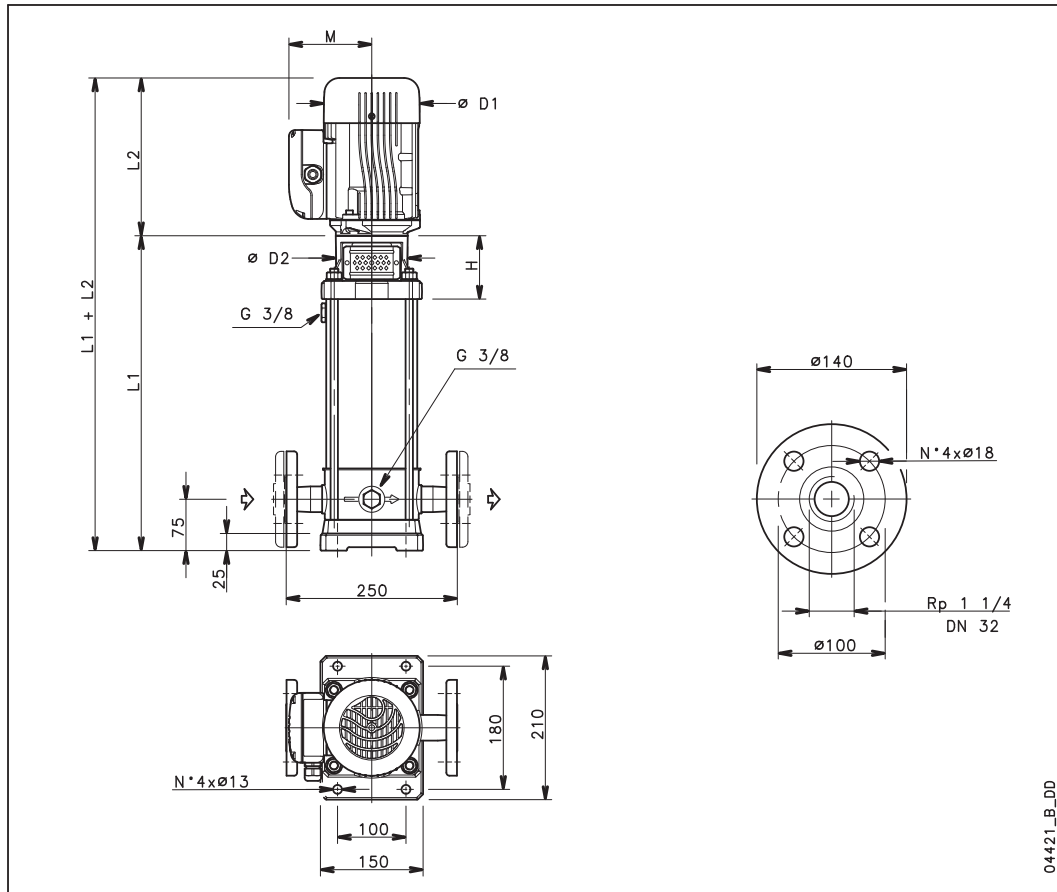
These performances are valid for liquids with density $\rho = 1.0 \text{ kg/dm}^3$ and kinematic viscosity $\nu = 1 \text{ mm}^2/\text{s}$.

Engineered for life



SV4 SERIES - DIMENSIONS AND WEIGHTS, 4 POLES

Version **F**: AISI 304, in-line ports, round flanges, PN25.
Version **N**: AISI 304, in-line ports, round flanges, PN25.



04421_B_DD

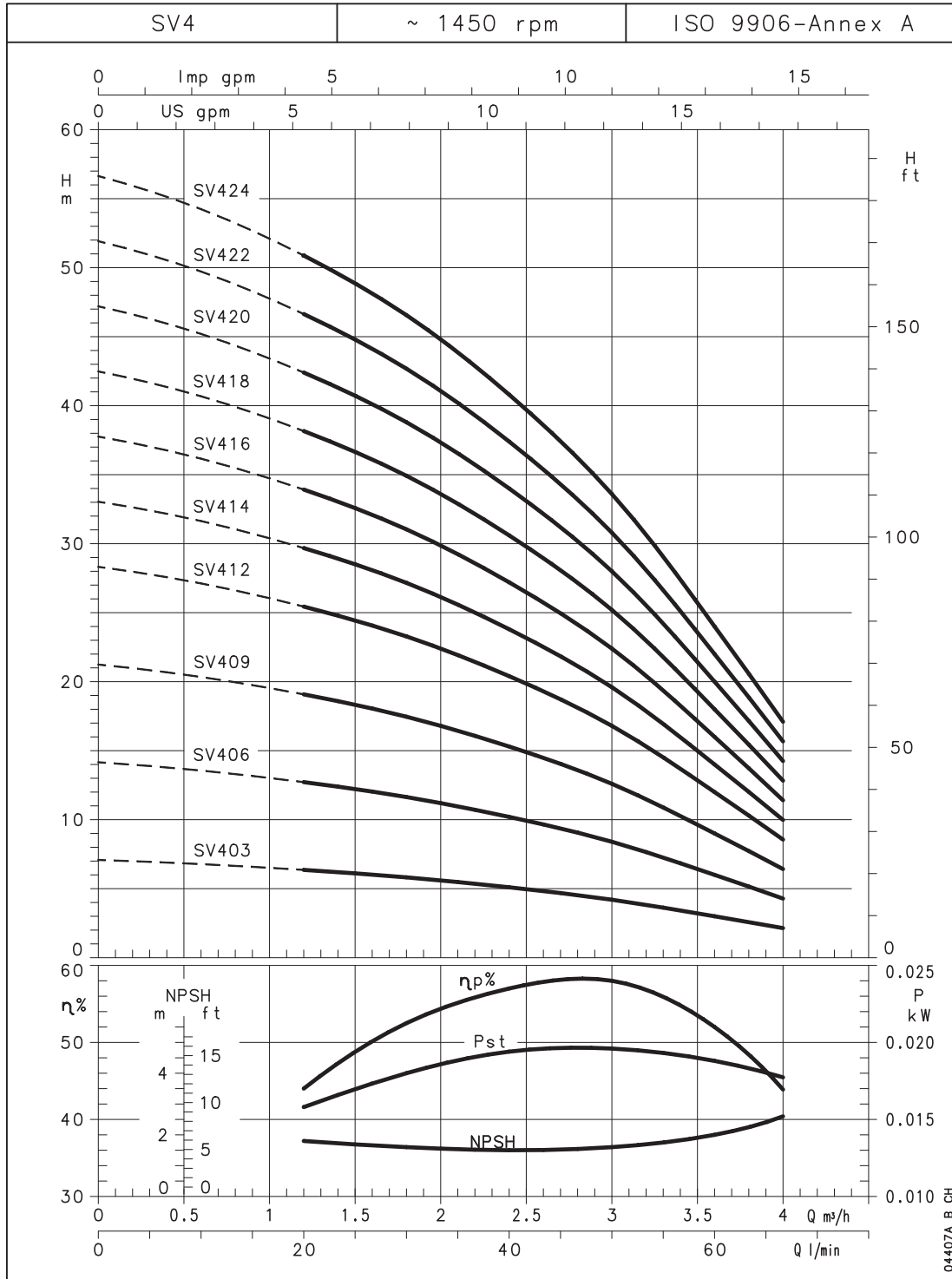
PUMP TYPE	MOTOR		DIMENSIONS (mm)							WEIGHT kg	
	kW	SIZE	L1	L2	H	M	D1	D2	PUMP	ELECTRIC PUMP	
SV403..4	0,25	71	310	231	93	121	140	105	10	16,5	
SV406..4	0,25	71	385	231	93	121	140	105	11,5	18	
SV409..4	0,25	71	460	231	93	121	140	105	13	19,5	
SV412..4	0,25	71	535	231	93	121	140	105	14,5	21	
SV414..4	0,37	71	585	231	93	121	140	105	15,5	23	
SV416..4	0,37	71	635	231	93	121	140	105	16,5	24	
SV418..4	0,37	71	685	231	93	121	140	105	17,5	25	
SV420..4	0,55	80	745	263	103	129	155	120	19	28	
SV422..4	0,55	80	795	263	103	129	155	120	20	29	
SV424..4	0,55	80	845	263	103	129	155	120	21	30	

sv4-4p50-en_c_td

Engineered for life



SV4 SERIES - OPERATING CHARACTERISTICS AT 50 Hz, 4 POLES



These performances are valid for liquids with density $\rho = 1.0 \text{ kg/dm}^3$ and kinematic viscosity $\nu = 1 \text{ mm}^2/\text{s}$.

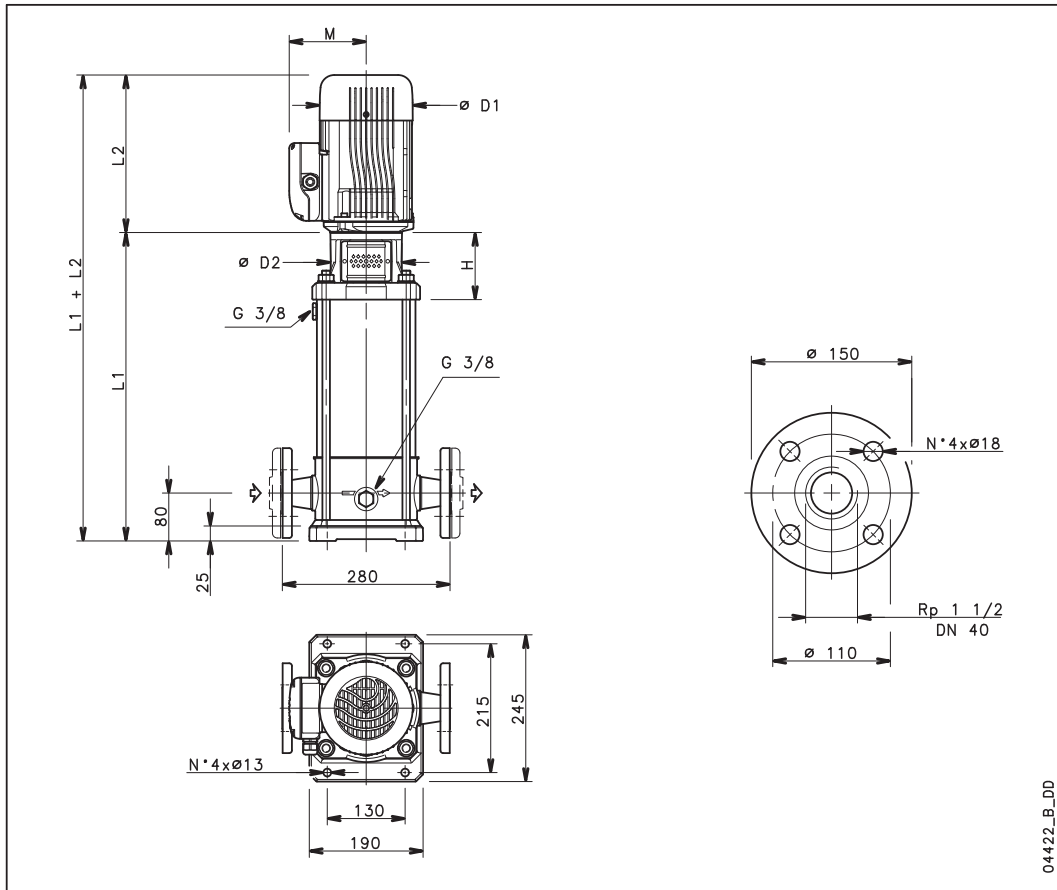
Engineered for life



General Catalogue

SV8 SERIES - DIMENSIONS AND WEIGHTS, 4 POLES

Version **F**: AISI 304, in-line ports, round flanges, PN25.
Version **N**: AISI 304, in-line ports, round flanges, PN25.



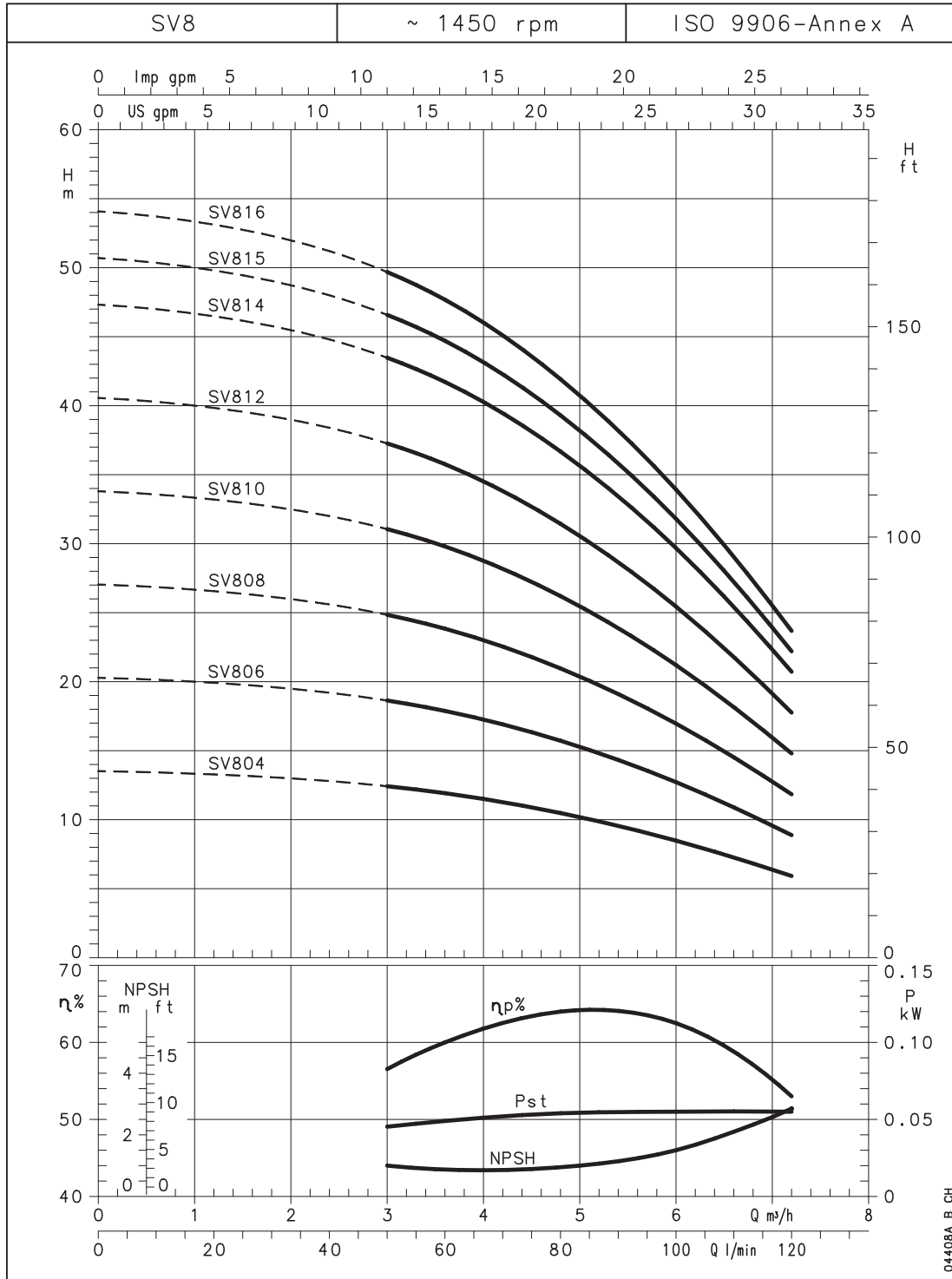
PUMP TYPE	MOTOR		DIMENSIONS (mm)						WEIGHT kg	
	kW	SIZE	L1	L2	H	M	D1	D2	PUMP	ELECTRIC PUMP
SV804..4	0,55	80	439	263	112	129	155	120	16,5	25
SV806..4	0,55	80	515	263	112	129	155	120	18,5	27
SV808..4	0,55	80	591	263	112	129	155	120	20,5	29
SV810..4	0,55	80	667	263	112	129	155	120	22,5	31
SV812..4	0,75	80	743	263	112	129	155	120	24,5	35
SV814..4	0,75	80	819	263	112	129	155	120	26,5	37
SV815..4	1,1	90	867	298	122	134	174	140	28	46
SV816..4	1,1	90	905	298	122	134	174	140	29	47

sv8-4p50-en_d_td

Engineered for life



SV8 SERIES - OPERATING CHARACTERISTICS AT 50 Hz, 4 POLES

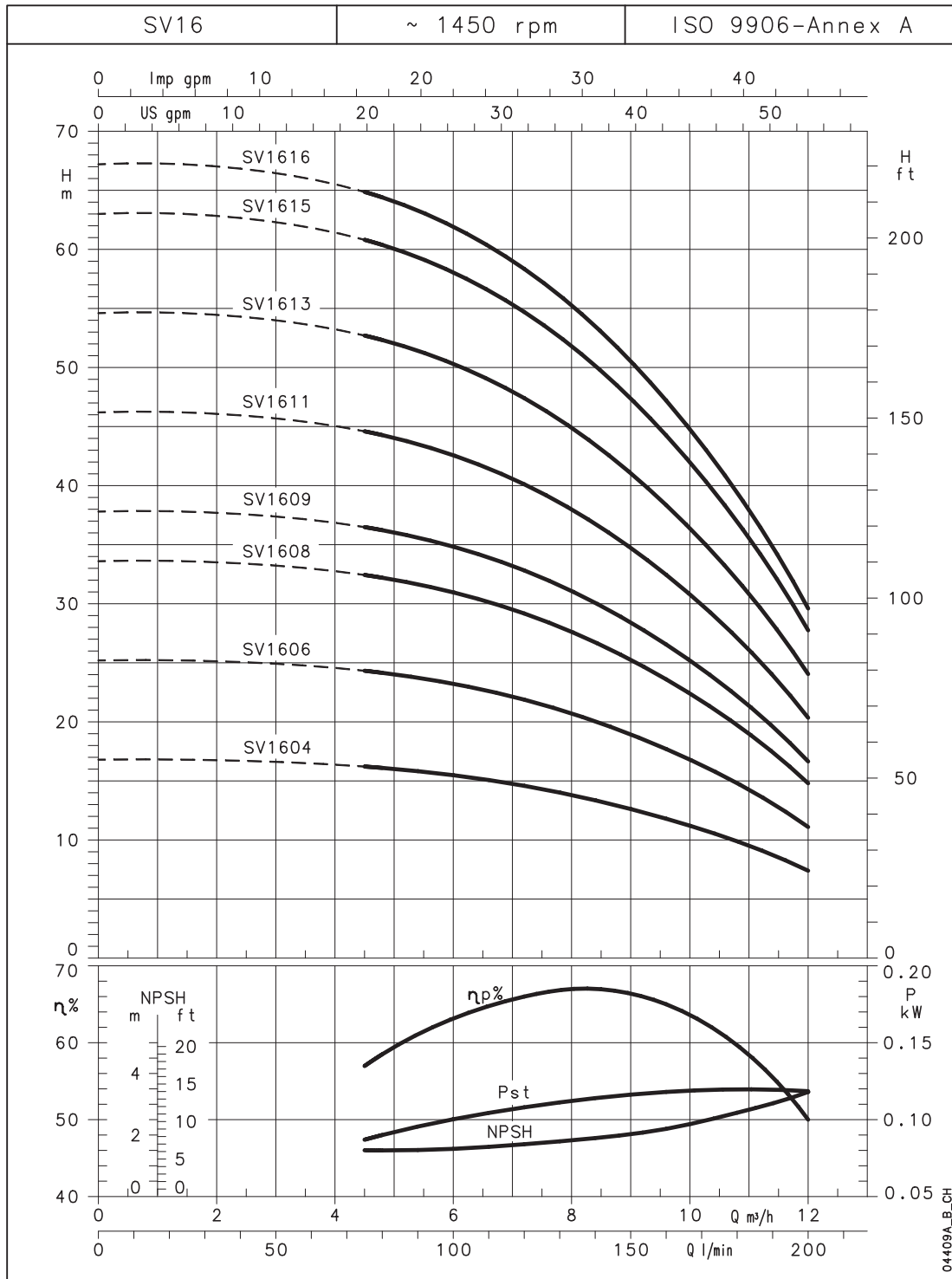


These performances are valid for liquids with density $\rho = 1.0 \text{ kg/dm}^3$ and kinematic viscosity $\nu = 1 \text{ mm}^2/\text{s}$.

Engineered for life



SV16 SERIES - OPERATING CHARACTERISTICS AT 50 Hz, 4 POLES



These performances are valid for liquids with density $\rho = 1.0 \text{ kg/dm}^3$ and kinematic viscosity $\nu = 1 \text{ mm}^2/\text{s}$.

Engineered for life